

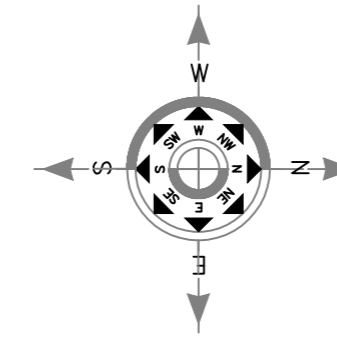
74°5'30"W

74°5'30"W

74°5'30"W

4°32'00"N

4°31'30"N

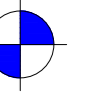


# CONVENCIONES

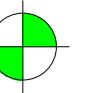
SECCIONES



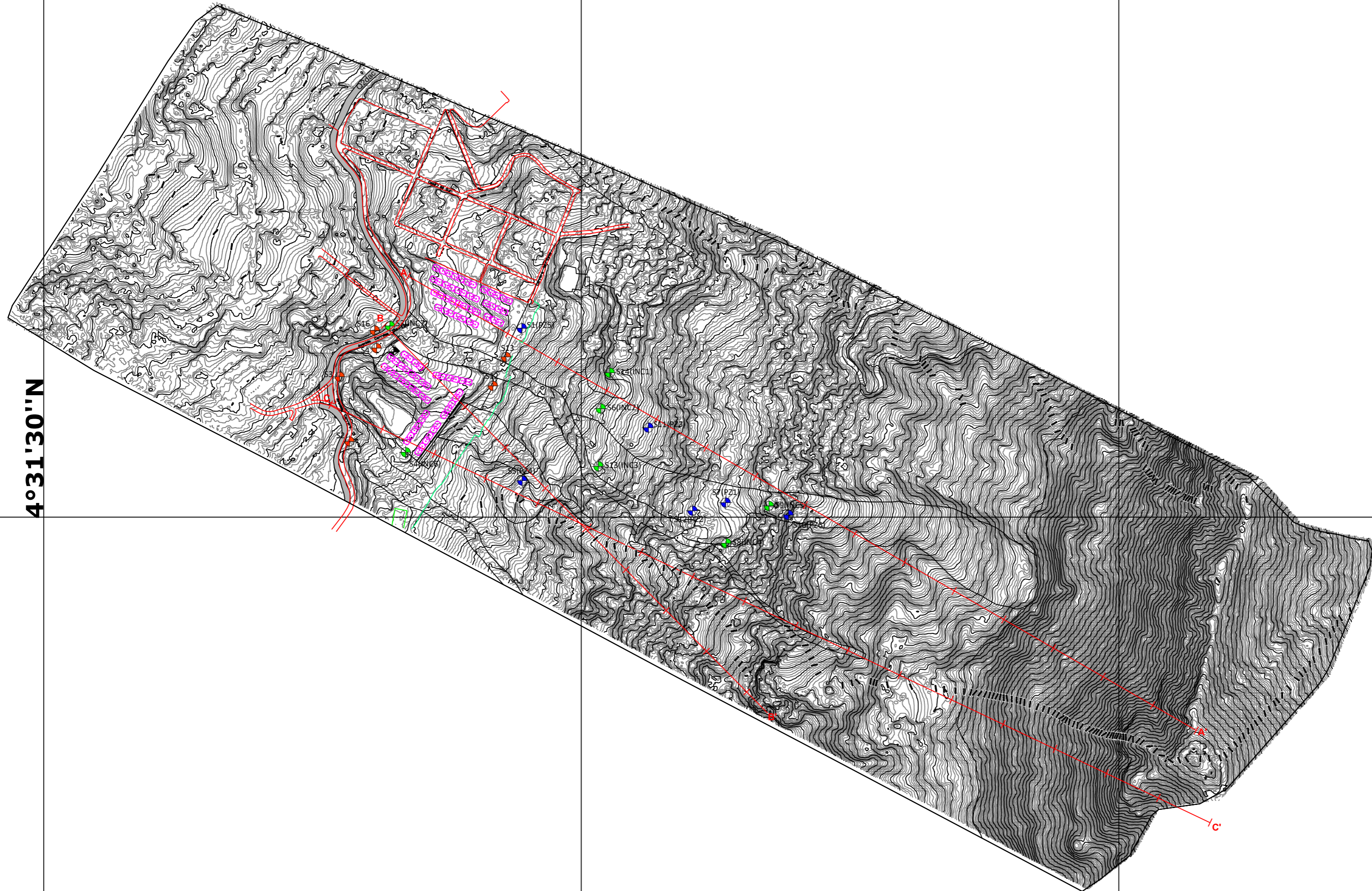
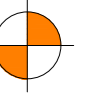
SONDEO (PIEZÓMETRO)



SONDEO (INCLINÓMETRO)



SONDEO ESTUDIO REDES



PROYECTO  
ARBOLEDA SANTA  
TERESITA

RESPONSABLE  
CARLOS RESTREPO  
2520222127 CND

CONVENCIONES

REV.	FECHA	ELAB.	REV.	APR.

CONTIENE:  
INVESTIGACIÓN SUBSOLAR

FECHA: AGOSTO DE 2019  
ESC: 1:300

2.0